

Listed Investment Companies

September 2011 NTAs

Update | 18 October 2011

Listed Investment Companies | Australia

Analyst: James Martin

+61 3 9924 0274

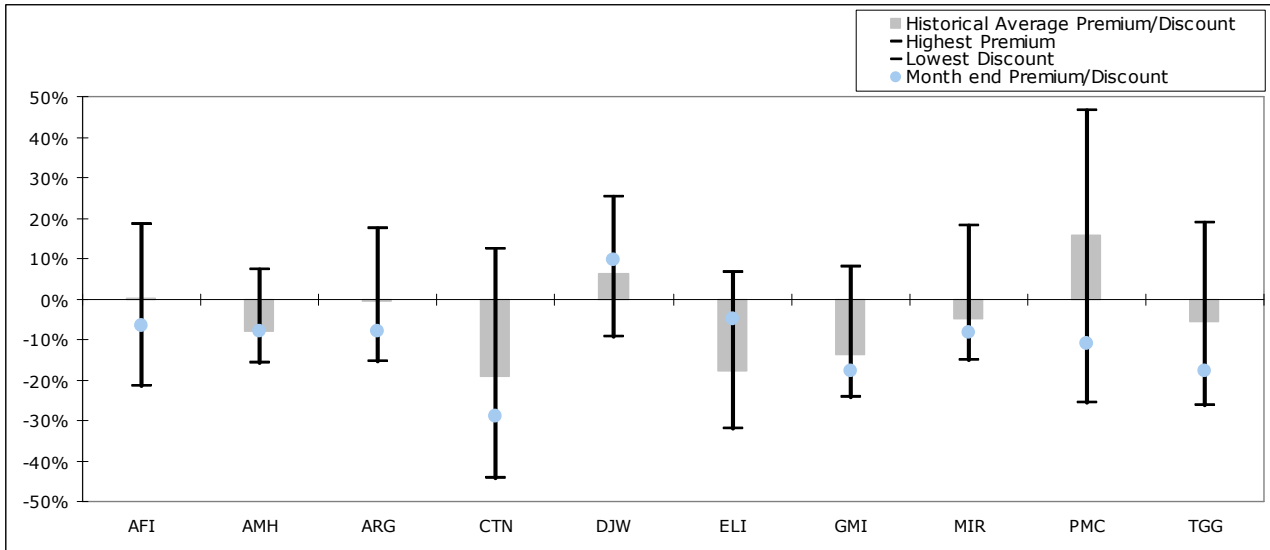
james.martin@jbwere.com

- The S&P/ASX 200 Accumulation Index posted a 6.1% fall in a very volatile month, even by recent standards. This also marked 6 straight negative months of performance for the local index. Global markets vacillated wildly on news headlines dominated by the same issues that investors have been grappling with during most of this year – the sovereign issues in Europe and a slowing US recovery.
- The volatile month battered a number of the LICs. This period has seen share prices fall by more than the underlying portfolio value, increasing the discount to NTA that a number of the LICs have been trading at. Notable were the movements in the large cap managers AFI and particularly ARG, which is trading at its largest discount since 2001.
- Portfolio performance for a number of the LICs has been weak on a 1 year basis, as the recent market weakness has resulted in several LIC portfolios cycling some tough numbers. Some of the managers which have been outperforming peers on a relative basis during this period include AMH and MIR.
- There has been some corporate action occurring in the LIC space following CTN's announcement of a takeover for all the ordinary shares in Contango Capital Partners Limited.
- Premiums and discounts to closing prices and performance data are summarised as per below:

Company Name	17-Oct-11 Price cps	30-Sep-11 Price cps	30-Sep-11 NTA before provision for tax on unrealised gains cps	30-Sep-11 NTA after provision for tax on unrealised gains cps	30-Sep-11 NTA Prem/(Dis) Before provision for tax on unrealised gains	30-Sep-11 NTA Prem/(Dis) After provision for tax on unrealised gains	3 year average Premium (Discount) Before provision for tax
Active Strategies							
Australian Equity Portfolios							
AFI AFIC	414	388	415	369	-6.5%	5.1%	3.3%
ALF Australian Leaders Fund Limited *	111	113	117	115	-3.4%	-1.7%	**
ALR Aberdeen Leaders Limited *	105	103	101	106	2.0%	-2.8%	-3.1%
AMH AMCIL Limited	65	64	69	68	-8.0%	-6.6%	-10.8%
AOD Aurora Sandringham Dividend Income Fund *	94	90	92	NA	-2.6%	NA	0.3%
ARG Argo Investments	513	487	529	496	-7.9%	-1.8%	2.5%
AUI Australian United *	560	535	609	554	-12.2%	-3.4%	-4.9%
BKI Brickworks Investment Company *	118	108	127	124	-15.0%	-12.9%	-12.2%
CTN Contango MicroCap Limited	95	87	122	121	-29.1%	-28.3%	-29.8%
CYA Century Australian Investments *	64	60	79	83	-23.9%	-27.7%	-16.0%
DJW Djerrirrh Investments Limited	358	330	301	307	9.6%	7.5%	13.3%
DUI Diversified United Investments *	245	221	258	240	-14.3%	-7.9%	-5.6%
ELI Emerging Leaders Investments Limited	86	80	84	90	-4.8%	-11.1%	-20.1%
IBC Ironbark Capital Limited (BTE) *	48	46	55	54	-16.5%	-14.0%	**
LRF LinQ Resources Fund *	73	68	117	NA	-41.9%	NA	**
MIR Mirrabooka Investments Limited	168	155	169	160	-8.3%	-3.1%	-0.6%
MLT Milton Corporation *	1475	1373	1550	1475	-11.4%	-6.9%	-3.1%
WAM WAM Capital Limited *	149	141	158	156	-10.6%	-9.7%	-19.4%
WHF Whitefield Limited *	265	251	291	315	-13.7%	-20.3%	-8.7%
WAX WAM Research Limited*	69	70	83	90	-15.9%	-22.6%	**
International Equity Portfolios							
AGF AMP Capital China Growth Fund *	69	67	92	NA	-27.2%	NA	**
GMI Global Mining Investments Limited	99	95	115	115	-17.8%	-17.8%	-15.9%
PMC Platinum Capital Limited	99	97	109	109	-11.1%	-11.1%	7.4%
TGG Templeton Global Growth	72	68	82	82	-17.7%	-17.7%	-18.3%
XKO S&P/ASX 300 Index	4272	4006		6.63%	% Change since end of month		

Source: JBWere, IRESS. * Not covered. ** 3 Year average not available

Current and historical NTA



Exchange traded funds

Company Name	17-Oct-11 Price cps	30-Sep-11 Price cps	17-Oct-11 NTA before provision for tax on unrealised gains cps	17-Oct-11 NTA after provision for tax on unrealised gains cps	17-Oct-11 NTA Premi/(Dis) Before provision for tax on unrealised gains	17-Oct-11 NTA Premi/(Dis) After provision for tax on unrealised gains	3 year average Premium (Discount) Before provision for tax
ETFs - Passive Strategies							
Australian Equity Portfolios							
SFY SPDR S&P/ASX 50 Fund	4198	3946	4199	4199	0.0%	0.0%	**
SLF SPDR S&P/ASX 200 Property Fund	725	703	725	725	0.0%	0.0%	**
STW SPDR S&P/ASX 200 Fund	4064	3809	4064	4064	0.0%	0.0%	**
VAS Vanguard Australian Shares Index	5520	5244	5509	5509	0.2%	0.2%	**
International Equity Portfolios							
IOO iShares S&P Global 100 #	5679	5658	5634	5634	0.8%	0.8%	**
IVV iShares S&P 500 #	11981	11871	11916	11916	0.5%	0.5%	**
IJH iShares S&P MidCap 400 #	8337	8172	8282	8282	0.7%	0.7%	**
IJR iShares S&P SmallCap 600 #	6300	6128	6271	6271	0.5%	0.5%	**
IVE iShares MSCI EAGG #	5109	5000	5004	5004	2.1%	2.1%	**
IEU iShares S&P Europe 350 #	3440	3361	3425	3425	0.4%	0.4%	**
IJP iShares MSCI Japan #	948	990	918	918	3.3%	3.3%	**
IEM iShares MSCI Emerging Markets #	3833	3768	3768	3768	1.7%	1.7%	**
ITW iShares MSCI Taiwan #	1248	1259	1221	1221	2.2%	2.2%	**
IKO iShares MSCI South Korea #	5088	5015	5063	5063	0.5%	0.5%	**
IZZ iShares FTSE/Xinhua China 25 #	3356	3313	3278	3278	2.4%	2.4%	**
IHK iShares MSCI Hong Kong #	1545	1516	1528	1528	1.1%	1.1%	**
ISG iShares MSCI Singapore #	1154	1153	1146	1146	0.7%	0.7%	**
IAA iShares Asia 50 #	3883	3884	3831	3831	1.4%	1.4%	**
IBK iShares MSCI BRIC #	3700	3637	3665	3665	1.0%	1.0%	**
IRU iShares Russell 2000 #	6851	6814	6897	6897	-0.7%	-0.7%	**
IXP iShares Global Telecommunications #	5644	5372	5552	5552	1.7%	1.7%	**
IXJ iShares Global Healthcare #	5384	5350	5228	5228	3.0%	3.0%	**
IXI iShares Consumer Staples #	6322	6383	6290	6290	0.5%	0.5%	**
VEU Vanguard All-World ex-US Shares Index #	4149	4096	4119	4119	0.7%	0.7%	**
VTS Vanguard US Total Market Shares Index #	6108	6033	6072	6072	0.6%	0.6%	**

Source: JBWere, IRESS. ** 3 Year average not available

NTA as at 14 October 2011 - converted using AUD/USD exchange rate at 4.00pm London Time the previous day (Source: IRESS)

In relation to the International ETFs, please note that any premiums / discounts to NTA may arise as a result of the time period between the Australian and US share markets close.

Investment Performance as at 30 September 2011 (Based on NTA movements including dividends)

Australian Equity Portfolios

	1 Year	3 Years pa	5 Years pa	7 Years pa	10 Years pa	15 Years pa	20 Years pa
Australian Foundation Investment Company Ltd	-7.4%	1.1%	1.3%	6.6%	8.2%	10.1%	10.7%
Aberdeen Leaders Limited *	-20.3%	-4.3%	-4.7%	2.9%	5.1%	6.3%	-
AMCIL Limited	-2.3%	7.3%	5.8%	8.8%	15.3%	-	-
Argo Investments	-8.8%	-0.1%	-0.5%	5.1%	7.5%	9.7%	10.2%
Australian Leaders Fund Limited *	-4.0%	9.9%	4.9%	8.5%	-	-	-
Australian United Limited *	-11.0%	0.0%	-0.6%	6.1%	8.0%	9.7%	-
Brickworks Investment Company *	-3.9%	2.4%	2.1%	6.6%	-	-	-
Contango MicroCap Limited	-8.3%	1.4%	-1.5%	6.5%	-	-	-
Century Australian Investments Limited *	-8.3%	1.4%	-1.5%	3.2%	-	-	-
Djerriwarrh Investments Limited	-8.8%	-0.2%	-0.6%	5.2%	6.3%	7.7%	8.6%
Diversified United Investments Limited *	-13.1%	-1.5%	-1.4%	6.0%	7.2%	8.2%	-
Emerging Leaders Investments Limited	-12.1%	-0.1%	-1.7%	-	-	-	-
Hunter Hall Global Value Limited *	-6.7%	5.0%	-4.5%	1.8%	-	-	-
Ironbark Capital Limited *	3.2%	7.2%	0.8%	3.8%	4.1%	5.4%	6.2%
Mirraboooka Investments Limited	-0.5%	3.3%	2.1%	7.2%	10.1%	-	-
Milton Corporation *	-6.5%	0.1%	0.0%	5.3%	8.2%	10.8%	-
Spider S&P/ASX 50 Fund	-9.6%	0.4%	-0.3%	5.8%	6.6%	-	-
Spider S&P/ASX 200 Property Fund	-6.7%	-10.3%	-12.8%	-4.7%	-	-	-
Spider S&P/ASX 200 Fund	-10.2%	-0.5%	-1.0%	5.4%	6.9%	-	-
WAM Capital Limited *	2.1%	9.5%	3.3%	6.5%	9.0%	-	-
Whitefield Limited *	-8.8%	-0.5%	-5.2%	1.1%	-	-	-
WAM Research Limited*	0.3%	1.8%	-3.4%	0.6%	-	-	-
<i>S&P/ASX All Ordinaries Accumulation Index</i>	-8.4%	0.0%	-0.4%	5.8%	7.5%	8.2%	9.0%
<i>S&P/ASX 50 Leaders Accumulation Index</i>	-7.9%	0.7%	0.0%	6.1%	7.0%	8.6%	9.9%

International Equity Portfolios

	1 Year	3 Years pa	5 Years pa	7 Years pa	10 Years pa	15 Years pa	20 Years pa
AMP Capital China Growth Fund	-3.2%	-2.4%	-	-	-	-	-
Global Mining Investments Limited	-13.9%	-2.1%	0.6%	4.6%	-	-	-
Platinum Capital Limited	-9.5%	1.5%	-2.6%	1.9%	4.0%	8.9%	-
Templeton Global Growth	-7.7%	-8.2%	-8.5%	-2.5%	-3.1%	1.6%	3.7%
<i>MSCI World Accumulation Index</i>	-4.0%	-6.5%	-6.9%	-1.0%	-2.6%	3.0%	5.1%

Share Price Performance as at 30 September 2011 (Based on Share Price movements including dividends)

Australian Equity Portfolios

	1 Year	3 Years pa	5 Years pa	7 Years pa	10 Years pa	15 Years pa	20 Years pa
Australian Foundation Investment Company Ltd	-14.4%	-2.9%	0.2%	6.6%	8.5%	9.1%	8.2%
Aberdeen Leaders Limited *	-15.2%	-6.0%	-2.7%	5.5%	6.1%	8.1%	11.5%
AMCIL Limited	1.4%	6.0%	6.4%	8.9%	18.0%	-	-
Argo Investments Limited	-12.8%	-6.5%	-2.9%	4.2%	7.1%	9.0%	9.0%
Australian Leaders Fund Limited *	8.2%	19.7%	8.5%	11.3%	-	-	-
Australian United Limited *	-14.8%	-6.1%	-2.8%	5.2%	7.1%	10.3%	11.6%
Brickworks Investment Company *	-5.3%	0.0%	0.6%	6.2%	-	-	-
Contango MicroCap Limited	0.8%	-1.0%	-2.9%	4.6%	-	-	-
Century Australian Investments Limited *	-20.9%	-3.6%	-4.2%	1.0%	-	-	-
Djerriwarrh Investments Limited	-12.5%	-1.0%	0.2%	5.4%	6.5%	7.5%	-
Diversified United Investments Limited *	-18.0%	-5.4%	-3.1%	6.0%	6.6%	9.6%	-
Emerging Leaders Investments Limited	7.8%	7.6%	1.6%	-	-	-	-
Hunter Hall Global Value Limited *	-9.0%	1.8%	-3.8%	-1.0%	-	-	-
Ironbark Capital Limited *	5.4%	5.7%	0.4%	3.1%	3.6%	4.4%	4.6%
Mirraboooka Investments Limited	-3.2%	2.4%	1.4%	7.5%	10.9%	-	-
Milton Corporation *	-10.6%	-4.0%	-2.8%	3.7%	6.4%	11.0%	11.6%
Spider S&P/ASX 50 Fund	-8.8%	0.3%	-0.3%	5.7%	6.6%	-	-
Spider S&P/ASX 200 Property Fund	-7.3%	-10.5%	-12.9%	-4.8%	-	-	-
Spider S&P/ASX 200 Fund	-9.1%	-0.4%	-1.0%	5.4%	6.8%	-	-
WAM Capital Limited *	15.8%	18.6%	3.7%	6.6%	9.6%	-	-
Whitefield Limited *	-11.7%	-1.9%	-4.6%	1.2%	-	-	-
WAM Research Limited*	2.7%	9.2%	-1.2%	1.1%	-	-	-
<i>S&P/ASX All Ordinaries Accumulation Index</i>	-8.4%	0.0%	-0.4%	5.8%	7.5%	8.2%	9.0%
<i>S&P/ASX 50 Leaders Accumulation Index</i>	-7.9%	0.7%	0.0%	6.1%	7.0%	8.6%	9.9%

International Equity Portfolios

	1 Year	3 Years pa	5 Years pa	7 Years pa	10 Years pa	15 Years pa	20 Years pa
AMP Capital China Growth Fund *	-15.2%	-2.7%	-	-	-	-	-
Global Mining Investments Limited*	-11.5%	-11.0%	-1.0%	2.6%	-	-	-
Platinum Capital Limited	-26.1%	-0.9%	-10.6%	-5.5%	0.2%	7.2%	-
Templeton Global Growth*	-7.6%	-9.0%	-11.5%	-4.4%	-5.0%	0.6%	3.9%
<i>MSCI World Accumulation Index</i>	-4.0%	-6.5%	-6.9%	-1.0%	-2.6%	3.0%	5.1%

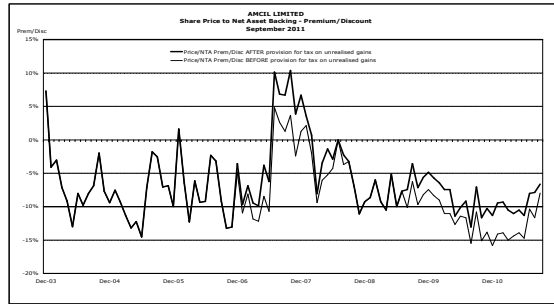
Source: Company Data, IRESS *Not covered by JBWere Research

The following charts depict graphically the historical premium and discounts to NTA that the LICs under our research coverage have traded at over time.

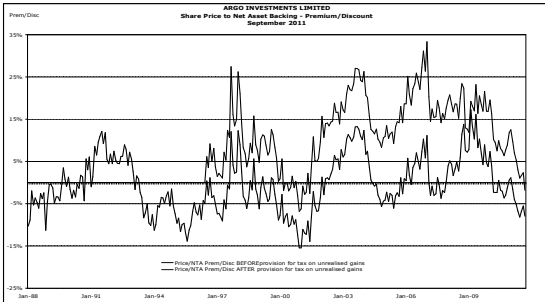
Australian Foundation Investment Company Ltd (AFI)



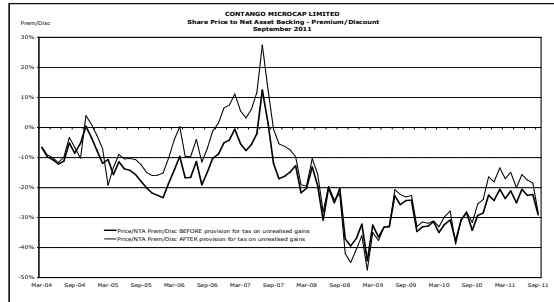
AMCIL Ltd (AMH)



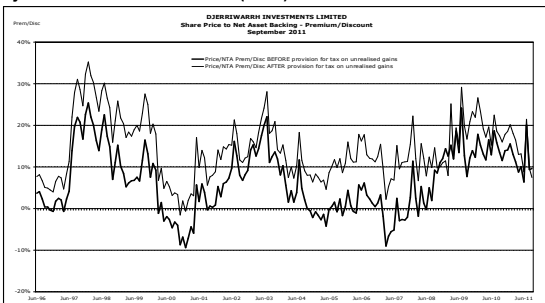
Argo Investments Ltd (ARG)



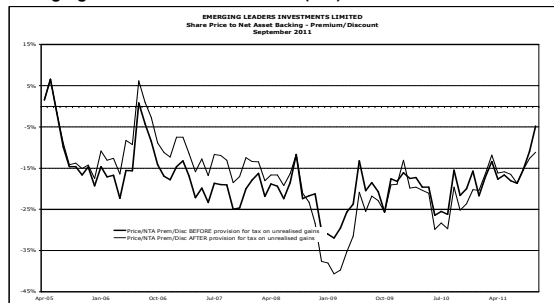
Contango Microcap Ltd (CTN)



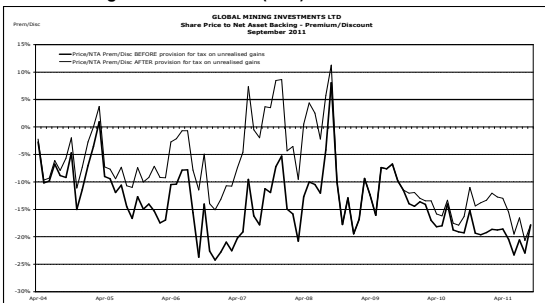
Djerriwarrh Investments Ltd (DJW)



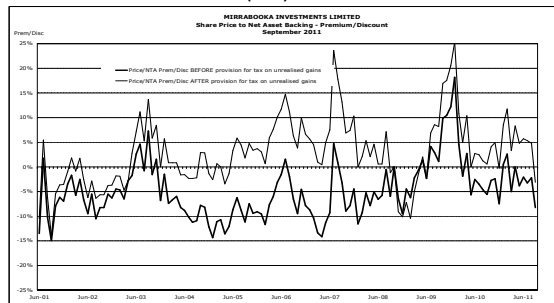
Emerging Leaders Investments Ltd (ELI)



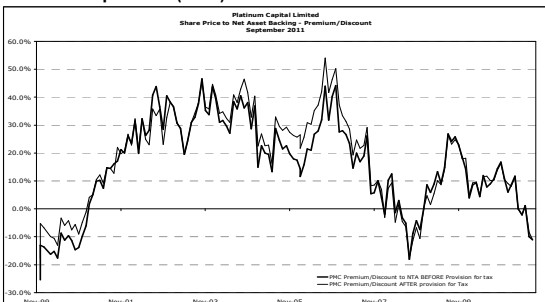
Global Mining Investments Ltd (GMI)



Mirraboopa Investments Ltd (MIR)



Platinum Capital Ltd (PMC)



Source: Manager Data, IRESS

Australia - Research Important Notice**Ownership and Material Conflicts of Interest**

JBWere policy prohibits its research personnel and their respective associates owning listed securities which are the subject of their research.

Research personnel compensation

Research personnel are paid in part based on the profitability of JBWere. This report has been prepared by the JBWere Investment Strategy Group for distribution to clients of JBWere and potentially to clients of other financial advisers. This research is for clients only, as stated above and is based on current public information that we consider reliable, but we do not represent it is accurate or complete, and it should not be relied on as such. We seek to update our research as appropriate, but various regulations may prevent us from doing so. Other than some industry reports published on a periodic basis, the large majority of reports are published at irregular intervals as appropriate in the analyst's judgment.

General Disclosures

Our advisers and other professionals may provide oral or written market commentary or trading strategies to our clients and our proprietary trading desks that reflect opinions that are contrary to the opinions expressed in this research. They may make investment decisions that are inconsistent with the recommendations or views expressed in this research.

We and our officers, directors, and employees, excluding research personnel, may from time to time have long or short positions in, act as principal in, and buy or sell, the securities or derivatives (including options and warrants) thereof of covered companies referred to in this research.

This research is not an offer to sell or the solicitation of an offer to buy any security in any jurisdiction where such an offer or solicitation would be illegal. It does not constitute a personal recommendation or take into account the particular investment objectives, financial situations, or needs of individual clients. Clients should consider whether any advice or recommendation in this research is suitable for their particular circumstances and, if appropriate, seek professional advice, including tax advice. The price and value of the investments referred to in this research and the income from them may fluctuate. Past performance is not a guide to future performance, future returns are not guaranteed, and a loss of original capital may occur. Certain transactions, including those involving futures, options, and other derivatives, give rise to substantial risk and are not suitable for all investors.

In producing research reports, members of JBWere's Strategy Research may attend site visits and other meetings hosted by the issuers the subject of its research reports. In some instances the costs of such site visits or meetings may be met in part or in whole by the issuers concerned if JBWere considers it is appropriate and reasonable in the specific circumstances relating to the site visit or meeting.

Our research is disseminated primarily electronically, and, in some cases, in printed form. Electronic research is simultaneously available to all clients.

Australia - Research Recommendation Definitions

Sell (S)	Stock is expected to underperform the S&P/ASX 200 for 12 months
Hold (H)	Stock is expected to perform in line with the S&P/ASX 200 for 12 months
Buy (B)	Stock is expected to outperform the S&P/ASX 200 for 12 months

Other Definitions

CS	Coverage Suspended. JBW has suspended coverage of this company.
NC	Not Covered. JBW does not cover this company.

No part of this material may be (i) copied, photocopied or duplicated in any form by any means or (ii) redistributed without the prior written consent of JBWere.

Copyright 2011 JBWere Pty Ltd ABN 68 137 978 360 AFSL 341162